

Device Count by SSID by Day of Month

Report Month: April 2024

E - Eduroam G - UCCS-Guest W - UCCS-Wireless T - Total (all SSIDs)

D	N	Min				Max				Avg 8am-6pm				Avg all Day			
		E	G	W	T	E	G	W	T	E	G	W	T	E	G	W	T
		Day of the Month															
Mo	1	240	488	1452	2187	519	981	4483	5983	438	864	3780	5082	350	679	2626	3654
Tu	2	296	537	1858	2699	579	1049	4879	6507	502	921	4165	5587	399	728	2953	4080
We	3	313	542	1908	2778	580	1170	5085	6835	491	976	4235	5702	396	758	2979	4133
Th	4	295	556	1879	2735	558	1066	4773	6387	479	920	4071	5470	383	737	2889	4008
Fr	5	259	534	1603	2445	449	859	3524	4832	398	768	2874	4040	337	651	2219	3206
Sa	6	255	526	1485	2294	284	1143	1714	3127	274	1009	1664	2947	274	751	1594	2619
Su	7	246	529	1514	2318	311	622	1817	2679	263	580	1643	2486	273	566	1639	2477
Mo	8	289	545	1708	2550	571	1033	4562	6166	486	903	3852	5241	392	721	2748	3861
Tu	9	305	554	1897	2761	587	1063	5051	6692	511	937	4232	5680	407	748	3003	4159
We	10	293	575	1880	2751	557	1090	4901	6537	494	940	4119	5553	400	754	2943	4096
Th	11	304	564	1901	2786	556	1029	4751	6292	482	905	4008	5395	394	734	2875	4003
Fr	12	260	560	1548	2370	431	885	3439	4755	379	779	2843	4000	327	664	2211	3202
Sa	13	221	542	1452	2244	253	668	1647	2562	239	625	1591	2454	239	587	1538	2364
Su	14	219	537	1409	2184	310	646	1827	2696	236	586	1553	2374	246	572	1568	2386
Mo	15	295	534	1723	2556	586	1011	4726	6323	501	893	3954	5348	402	719	2825	3946
Tu	16	317	554	1911	2791	584	1058	5035	6650	508	934	4260	5702	409	747	3032	4188
We	17	308	546	1903	2764	571	1106	5031	6687	489	944	4175	5608	398	752	2986	4136
Th	18	285	550	1856	2691	561	1035	4733	6312	484	915	3995	5393	384	728	2860	3972
Fr	19	242	533	1534	2323	429	869	3425	4723	372	738	2819	3929	311	633	2182	3127
Sa	20	216	518	1446	2218	248	689	1710	2637	238	635	1646	2519	234	585	1571	2389
Su	21	214	524	1447	2208	287	674	1821	2704	237	594	1612	2442	245	571	1610	2425
Mo	22	279	536	1745	2566	566	1036	4624	6226	486	886	3885	5257	381	704	2762	3847
Tu	23	314	523	1866	2711	598	1075	5079	6730	519	932	4251	5702	412	731	3011	4153
We	24	309	550	1919	2792	552	1055	4864	6454	494	930	4121	5545	398	741	2962	4100
Th	25	276	546	1801	2645	551	1015	4670	6213	467	887	3912	5265	376	716	2803	3895
Fr	26	212	543	1473	2243	406	824	3433	4663	342	721	2793	3855	288	628	2146	3063
Sa	27	214	530	1417	2174	253	595	1654	2494	234	577	1583	2394	231	561	1513	2305
Su	28	201	521	1416	2154	270	654	1820	2660	217	583	1561	2361	226	563	1570	2360
Mo	29	270	533	1711	2516	529	1058	4579	6160	472	896	3849	5217	375	710	2754	3840
Tu	30	312	537	1870	2727	531	1003	4842	6363	477	869	4021	5367	390	703	2897	3990

Monthly Summary of Total Devices for all SSIDs	
Minimum Daily Device Count:	2154
Date of minimum occurrence:	Sun 04/28/2024
Average M-F 8a-6p Device Count:	5179
Maximum Daily Device Count:	6835
Date of maximum occurrence:	Wed 04/03/2024

Summary of Total Devices for all SSIDs by Day of Week					
Day of Week	Avg Min	Day of Week	Avg 8a-6p	Day of Week	Avg Max
Su	2216	Su	2416	Su	2685
Mo	2475	Mo	5229	Mo	6172
Tu	2738	Tu	5608	Tu	6588
We	2771	We	5602	We	6628
Th	2714	Th	5381	Th	6301
Fr	2345	Fr	3956	Fr	4743
Sa	2233	Sa	2578	Sa	2705

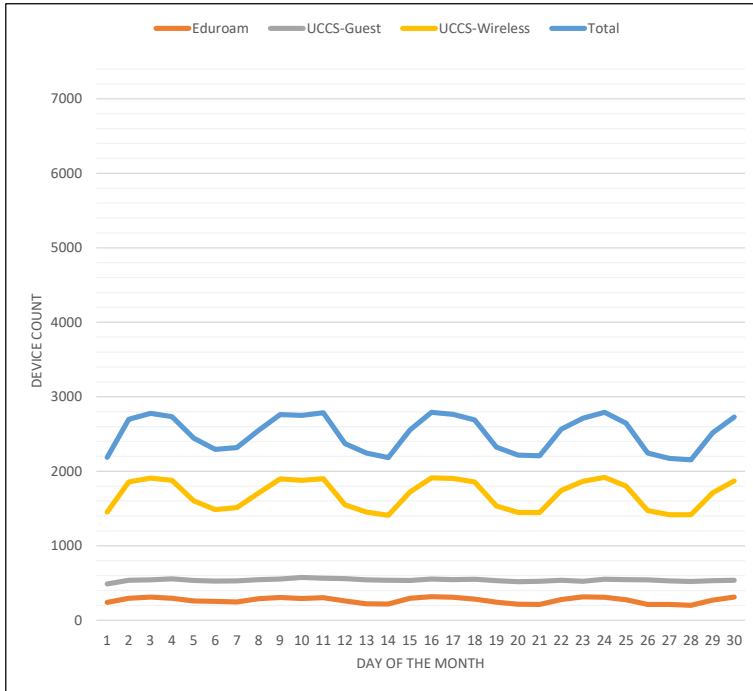
Report Notes

- > Device counts are measured every hour, every day, for each of the three SSIDs.
- > The MIN Device count for a particular day is the lowest recorded count based on all of the hourly measurements taken that day.
- > The MAX Device count for a particular day is the highest recorded count based on all of the hourly measurements taken that day.
- > The AVG Device count for a particular day averages all recorded hourly counts. The "all-day" average averages all hourly measurements, while the "8a-6p" average only averages the counts taken during that specific time frame.

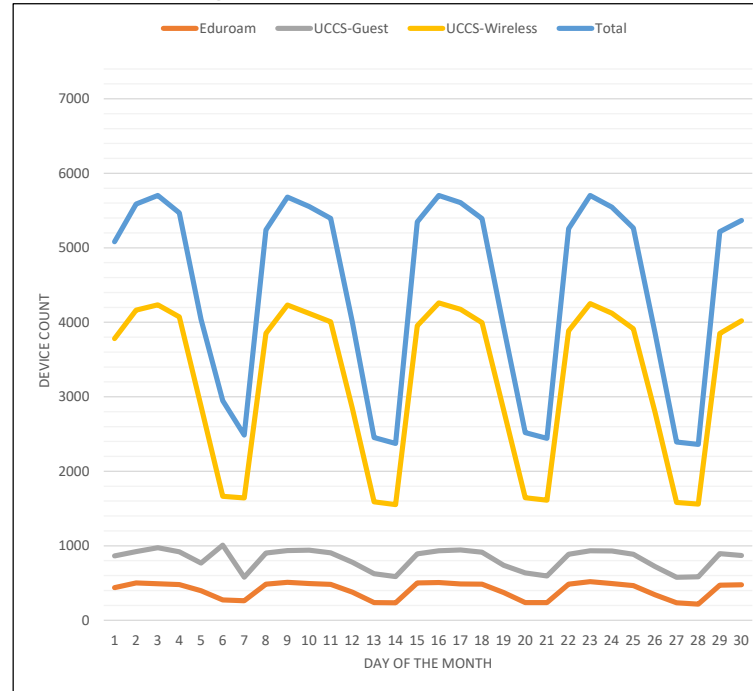
For more on wireless stats and reporting please visit <https://wireless.uccs.edu>

Device Count by SSID by Day of Month
Report Month: April 2024

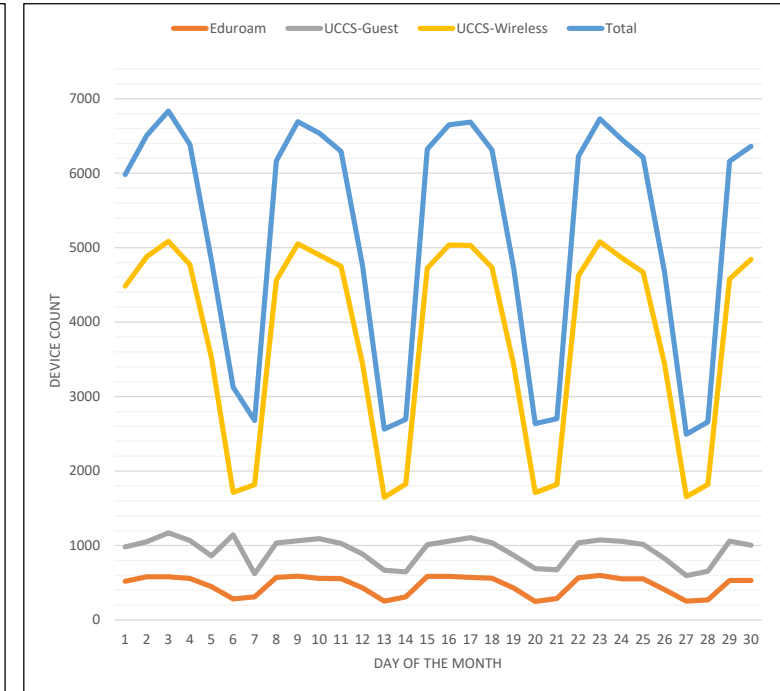
Minimum Device Count



Avg Device Count between 8am-6pm



Maximum Device Count



For more on wireless stats and reporting please visit <https://wireless.uccs.edu>