

Device Count by SSID by Day of Month

Report Month: February 2024

E - Eduroam G - UCCS-Guest W - UCCS-Wireless T - Total (all SSIDs)

Day of the Month	D	N	Min				Max				Avg 8am-6pm				Avg all Day			
			E	G	W	T	E	G	W	T	E	G	W	T	E	G	W	T
Th	1	264	525	2058	2872	542	1144	5355	6992	464	968	4536	5969	360	744	3199	4303	
Fr	2	243	515	1637	2408	432	899	4021	5352	368	772	3256	4396	302	638	2474	3414	
Sa	3	220	501	1592	2318	252	581	1729	2537	231	553	1671	2455	234	534	1640	2407	
Su	4	208	504	1577	2301	276	635	2038	2864	221	558	1716	2495	234	544	1745	2522	
Mo	5	257	525	1910	2699	527	1200	5315	7042	459	988	4452	5900	362	752	3147	4260	
Tu	6	277	540	2110	2930	547	1166	5408	7075	485	1005	4695	6185	383	771	3344	4499	
We	7	285	535	2125	2954	522	1209	5536	7261	469	1025	4670	6164	373	779	3316	4468	
Th	8	269	548	2023	2856	530	1204	5240	6973	478	995	4442	5915	374	766	3176	4316	
Fr	9	232	535	1681	2448	411	887	3750	5036	362	756	3070	4188	303	638	2395	3337	
Sa	10	211	514	1602	2340	255	623	1794	2605	233	548	1729	2510	231	550	1687	2467	
Su	11	192	510	1576	2282	256	568	1943	2747	206	537	1637	2380	216	536	1657	2409	
Mo	12	256	527	1865	2661	539	1139	5165	6830	463	971	4359	5793	362	747	3087	4196	
Tu	13	282	551	2101	2944	570	1131	5461	7162	483	994	4652	6129	379	769	3305	4454	
We	14	282	549	2096	2930	532	1194	5514	7211	459	989	4581	6028	364	760	3215	4339	
Th	15	274	551	1980	2813	532	1113	5053	6687	460	955	4316	5730	361	749	3073	4183	
Fr	16	191	517	1387	2108	269	560	1974	2803	221	542	1709	2472	227	537	1707	2470	
Sa	17	165	503	1256	1927	206	524	1454	2182	188	512	1392	2092	191	511	1388	2089	
Su	18	184	500	1323	2024	225	534	1549	2295	193	515	1357	2065	199	514	1385	2097	
Mo	19	220	506	1471	2199	301	662	2595	3547	283	613	2331	3227	260	565	1950	2775	
Tu	20	253	531	1807	2599	497	1039	4883	6419	443	899	4123	5464	352	714	2924	3990	
We	21	285	546	1961	2795	516	1089	5188	6792	458	942	4334	5735	370	737	3064	4171	
Th	22	267	545	1880	2713	500	1048	4952	6500	433	924	4145	5503	348	731	2961	4040	
Fr	23	224	542	1576	2359	391	865	3611	4867	335	772	2991	4098	281	653	2280	3214	
Sa	24	183	533	1459	2227	230	693	1666	2544	198	642	1590	2431	208	589	1546	2343	
Su	25	195	533	1459	2214	273	629	1956	2809	213	596	1667	2476	224	575	1670	2469	
Mo	26	261	547	1859	2675	530	1006	5212	6701	459	898	4296	5653	365	723	3051	4139	
Tu	27	295	553	2027	2884	593	1094	5300	6987	508	955	4537	5999	397	753	3226	4376	
We	28	289	548	2073	2910	557	1136	5308	7001	483	953	4508	5944	384	749	3218	4351	
Th	29	280	549	1950	2804	544	1107	5208	6854	470	946	4348	5764	370	742	3087	4199	

Monthly Summary of Total Devices for all SSIDs	
Minimum Daily Device Count:	1927
Date of minimum occurrence:	Sat 02/17/2024
Average M-F 8a-6p Device Count:	5346
Maximum Daily Device Count:	7261
Date of maximum occurrence:	Wed 02/07/2024

Summary of Total Devices for all SSIDs by Day of Week					
Day of Week	Avg Min	Day of Week	Avg 8a-6p	Day of Week	Avg Max
Su	2205	Su	2354	Su	2679
Mo	2559	Mo	5143	Mo	6030
Tu	2839	Tu	5944	Tu	6911
We	2897	We	5968	We	7066
Th	2812	Th	5776	Th	6801
Fr	2331	Fr	3788	Fr	4515
Sa	2203	Sa	2372	Sa	2467

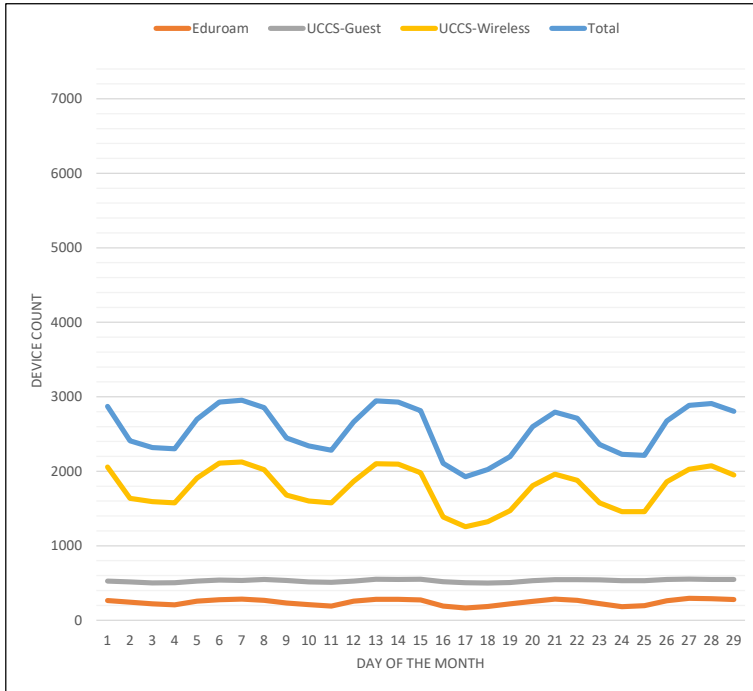
Report Notes

- > Device counts are measured every hour, every day, for each of the three SSIDs.
- > The MIN Device count for a particular day is the lowest recorded count based on all of the hourly measurements taken that day.
- > The MAX Device count for a particular day is the highest recorded count based on all of the hourly measurements taken that day.
- > The AVG Device count for a particular day averages all recorded hourly counts. The "all-day" average averages all hourly measurements, while the "8a-6p" average only averages the counts taken during that specific time frame.

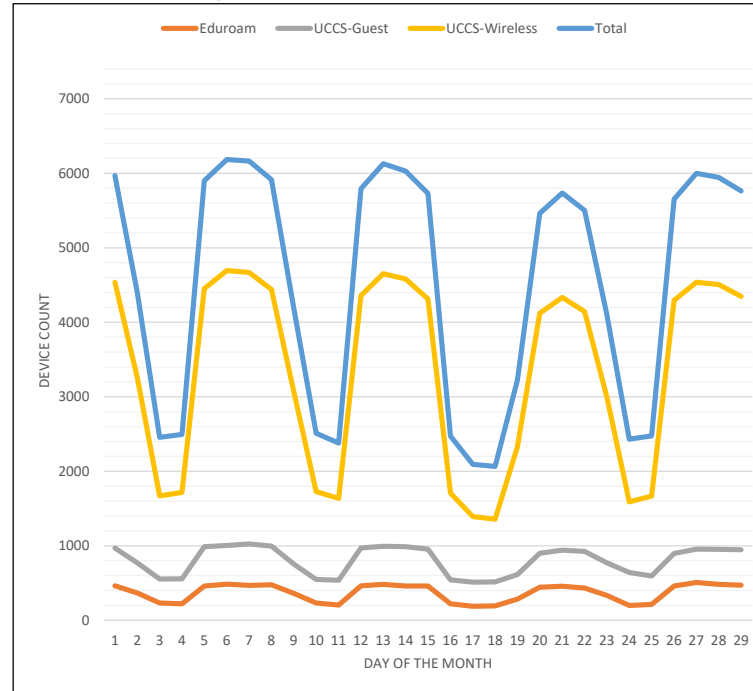
For more on wireless stats and reporting please visit <https://wireless.uccs.edu>

Device Count by SSID by Day of Month
Report Month: February 2024

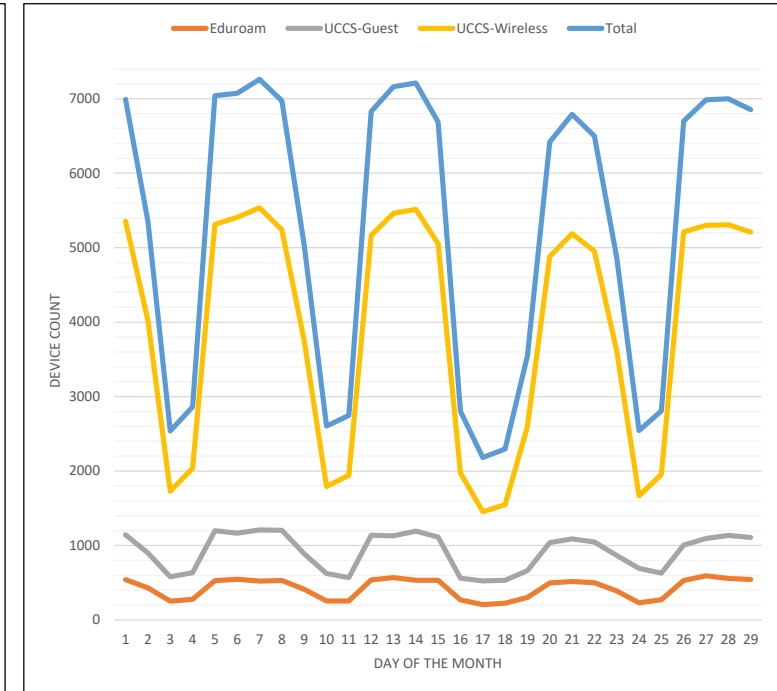
Minimum Device Count



Avg Device Count between 8am-6pm



Maximum Device Count



For more on wireless stats and reporting please visit <https://wireless.uccs.edu>