

Device Count by SSID by Day of Month

Report Month: July 2024

E - Eduroam G - UCSS-Guest W - UCSS-Wireless T - Total (all SSIDs)

D	N	Min				Max				Avg 8am-6pm				Avg all Day			
		E	G	W	T	E	G	W	T	E	G	W	T	E	G	W	T
		Day of the Month															
Mo	1	39	177	245	464	133	399	1160	1683	102	326	949	1377	70	246	568	884
Tu	2	38	178	262	485	165	412	1270	1847	119	333	1008	1460	77	250	597	923
We	3	37	179	253	475	107	376	1119	1602	82	319	887	1288	59	245	532	836
Th	4	24	170	210	409	36	179	257	469	31	174	244	448	31	174	239	444
Fr	5	28	166	222	424	53	205	356	601	43	195	315	552	37	183	271	491
Sa	6	34	169	221	432	44	218	309	547	40	197	283	519	40	190	255	485
Su	7	36	187	220	463	61	226	320	597	46	210	277	533	44	212	254	510
Mo	8	39	212	227	482	134	441	1234	1802	113	380	1022	1515	79	305	595	979
Tu	9	44	279	262	595	145	468	1324	1934	114	426	1077	1617	77	361	631	1069
We	10	47	319	267	636	139	500	1319	1958	118	459	1087	1664	83	392	645	1119
Th	11	43	250	292	616	141	500	1274	1909	114	411	1042	1566	78	353	632	1063
Fr	12	37	233	283	558	120	356	1037	1513	92	304	811	1208	66	275	524	865
Sa	13	38	221	257	527	50	257	358	651	47	237	345	628	45	237	302	584
Su	14	38	210	247	497	56	309	311	650	50	255	291	595	47	247	277	570
Mo	15	40	249	261	557	140	424	1219	1770	113	388	1012	1513	76	322	609	1007
Tu	16	45	273	289	617	147	456	1278	1881	119	410	1057	1585	79	345	637	1061
We	17	42	273	303	625	141	501	1290	1932	117	448	1077	1642	79	360	655	1094
Th	18	47	237	307	596	135	402	1298	1831	106	360	1027	1493	74	315	628	1017
Fr	19	41	240	281	569	109	392	915	1416	89	342	752	1182	64	298	498	860
Sa	20	33	162	260	455	45	313	353	708	41	268	320	630	40	247	292	578
Su	21	27	158	250	438	44	249	299	584	37	210	286	533	36	196	273	506
Mo	22	33	186	250	473	116	354	1060	1508	98	316	910	1323	65	250	554	870
Tu	23	35	192	271	498	142	383	1247	1767	113	329	1029	1471	71	258	609	938
We	24	32	173	266	490	133	418	1222	1761	106	323	1005	1434	69	252	599	919
Th	25	38	166	261	469	140	334	1211	1685	103	286	978	1367	68	225	584	877
Fr	26	35	161	264	462	92	326	978	1394	72	256	755	1083	54	209	488	750
Sa	27	28	155	237	428	40	194	320	542	32	181	299	513	35	171	268	474
Su	28	31	159	234	427	45	180	307	527	39	172	291	502	36	168	266	471
Mo	29	33	161	241	435	123	305	1125	1533	100	268	941	1308	65	212	567	843
Tu	30	34	163	282	483	140	328	1262	1699	108	282	1037	1427	68	217	620	906
We	31	34	162	284	485	124	335	1195	1652	104	281	986	1371	69	220	604	893

Monthly Summary of Total Devices for all SSIDs	
Minimum Daily Device Count:	409
Date of minimum occurrence:	Thu 07/04/2024
Average M-F 8a-6p Device Count:	1343
Maximum Daily Device Count:	1958
Date of maximum occurrence:	Wed 07/10/2024

Summary of Total Devices for all SSIDs by Day of Week					
Day of Week	Avg Min	Day of Week	Avg 8a-6p	Day of Week	Avg Max
Su	456	Su	541	Su	590
Mo	482	Mo	1407	Mo	1659
Tu	536	Tu	1512	Tu	1826
We	542	We	1480	We	1781
Th	523	Th	1219	Th	1474
Fr	503	Fr	1006	Fr	1231
Sa	461	Sa	572	Sa	612

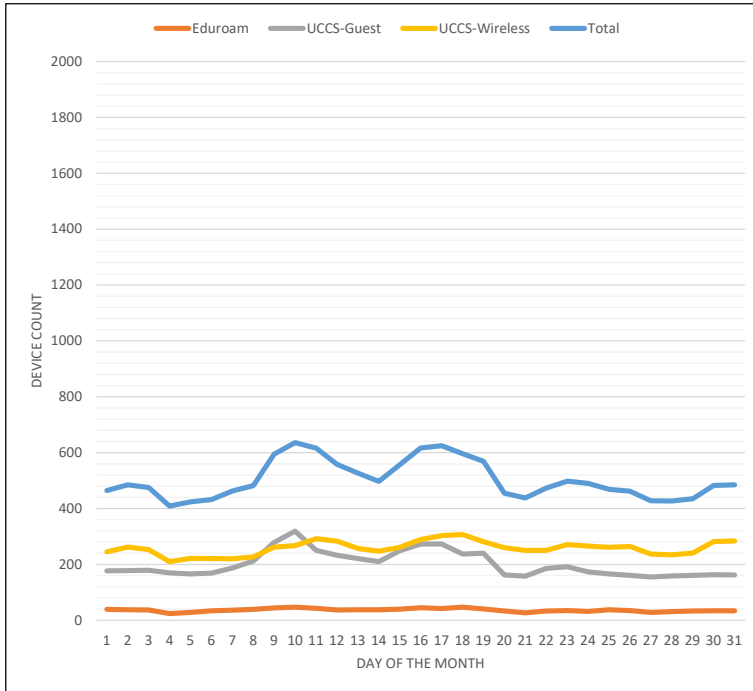
Report Notes

- > Device counts are measured every hour, every day, for each of the three SSIDs.
- > The MIN Device count for a particular day is the lowest recorded count based on all of the hourly measurements taken that day.
- > The MAX Device count for a particular day is the highest recorded count based on all of the hourly measurements taken that day.
- > The AVG Device count for a particular day averages all recorded hourly counts. The "all-day" average averages all hourly measurements, while the "8a-6p" average only averages the counts taken during that specific time frame.

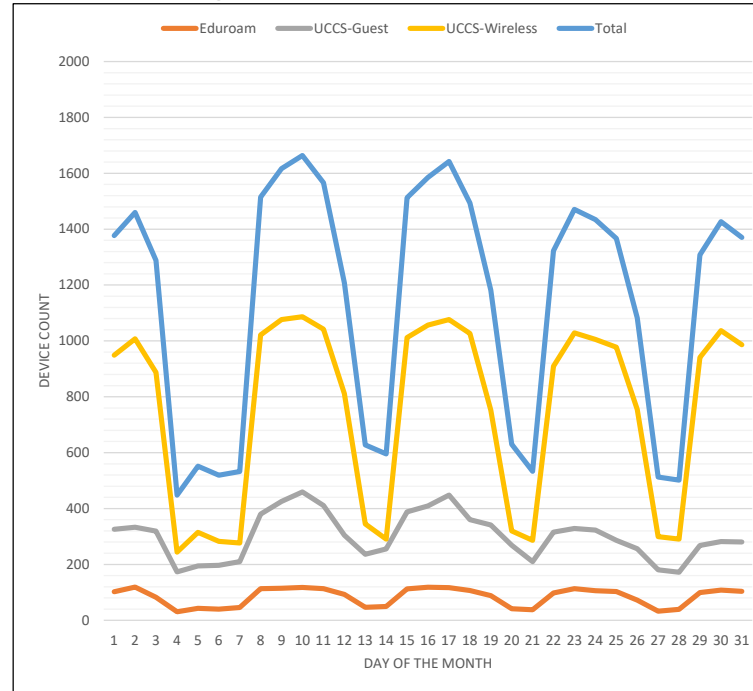
For more on wireless stats and reporting please visit <https://wireless.uccs.edu>

Device Count by SSID by Day of Month
Report Month: July 2024

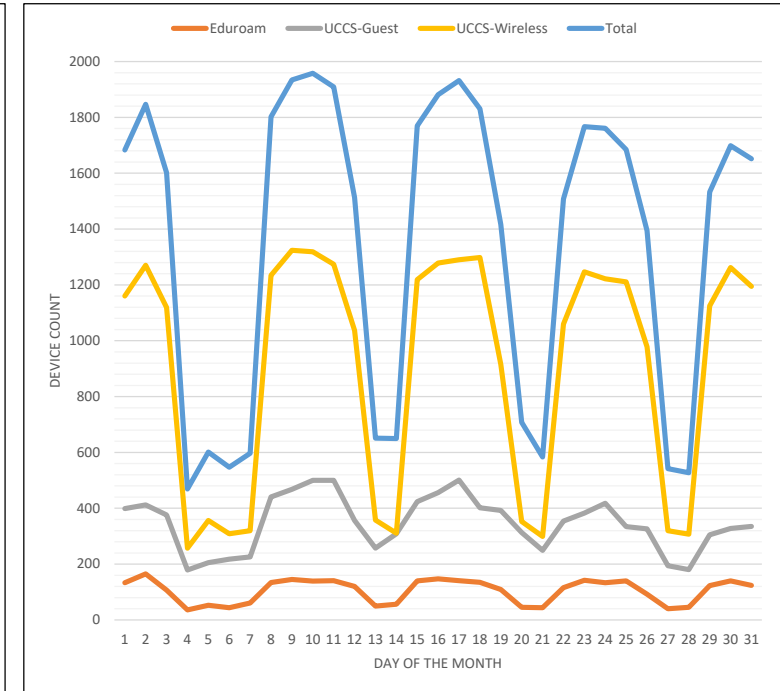
Minimum Device Count



Avg Device Count between 8am-6pm



Maximum Device Count



For more on wireless stats and reporting please visit <https://wireless.uccs.edu>