

# Device Count by SSID by Day of Month

Report Month: March 2024

E - Eduroam G - UCSS-Guest W - UCSS-Wireless T - Total (all SSIDs)

D	N	Min				Max				Avg 8am-6pm				Avg all Day			
		E	G	W	T	E	G	W	T	E	G	W	T	E	G	W	T
		Day of the Month															
Fr	1	226	538	1623	<b>2395</b>	398	871	3721	<b>4990</b>	343	767	3065	<b>4174</b>	291	651	2362	<b>3303</b>
Sa	2	199	520	1543	<b>2298</b>	236	673	1685	<b>2580</b>	218	631	1633	<b>2482</b>	219	587	1601	<b>2407</b>
Su	3	197	519	1502	<b>2225</b>	264	610	1924	<b>2765</b>	217	565	1624	<b>2406</b>	223	555	1660	<b>2438</b>
Mo	4	259	548	1848	<b>2655</b>	541	1140	5042	<b>6723</b>	457	972	4201	<b>5630</b>	357	763	2952	<b>4072</b>
Tu	5	252	594	1756	<b>2621</b>	520	1245	5228	<b>6876</b>	457	1054	4293	<b>5804</b>	354	827	3011	<b>4192</b>
We	6	238	627	1715	<b>2582</b>	521	1267	4975	<b>6740</b>	455	1083	4220	<b>5757</b>	351	853	2942	<b>4146</b>
Th	7	254	629	1673	<b>2576</b>	528	1195	4693	<b>6401</b>	452	995	3897	<b>5344</b>	350	808	2734	<b>3892</b>
Fr	8	203	622	1430	<b>2302</b>	398	1076	3294	<b>4730</b>	319	919	2635	<b>3873</b>	267	765	2002	<b>3033</b>
Sa	9	191	607	1227	<b>2051</b>	228	790	1527	<b>2522</b>	206	720	1401	<b>2327</b>	208	667	1348	<b>2222</b>
Su	10	180	618	1183	<b>2016</b>	243	747	1663	<b>2597</b>	199	692	1353	<b>2244</b>	204	678	1385	<b>2267</b>
Mo	11	226	664	1427	<b>2350</b>	481	1455	4155	<b>5959</b>	427	1208	3532	<b>5166</b>	342	920	2542	<b>3803</b>
Tu	12	288	618	1891	<b>2807</b>	579	1211	5106	<b>6896</b>	499	1061	4276	<b>5836</b>	395	838	3024	<b>4257</b>
We	13	277	612	1763	<b>2674</b>	567	1226	5113	<b>6899</b>	489	1048	4266	<b>5803</b>	381	821	2963	<b>4164</b>
Th	14	261	594	1723	<b>2585</b>	291	624	1831	<b>2709</b>	273	613	1797	<b>2684</b>	274	612	1773	<b>2659</b>
Fr	15	251	582	1583	<b>2443</b>	288	624	1749	<b>2650</b>	260	605	1687	<b>2552</b>	265	603	1676	<b>2544</b>
Sa	16	227	553	1422	<b>2230</b>	263	669	1682	<b>2600</b>	240	621	1582	<b>2442</b>	245	594	1540	<b>2379</b>
Su	17	226	549	1391	<b>2180</b>	279	602	1724	<b>2566</b>	238	573	1518	<b>2329</b>	248	568	1523	<b>2338</b>
Mo	18	275	551	1650	<b>2481</b>	565	1122	4804	<b>6484</b>	474	961	4038	<b>5472</b>	375	755	2837	<b>3967</b>
Tu	19	297	572	1959	<b>2828</b>	561	1127	5131	<b>6819</b>	490	993	4351	<b>5834</b>	395	779	3094	<b>4269</b>
We	20	295	556	1963	<b>2826</b>	530	1110	4942	<b>6582</b>	464	958	4187	<b>5610</b>	375	759	3011	<b>4145</b>
Th	21	274	555	1599	<b>2428</b>	509	1024	4592	<b>6125</b>	440	898	3849	<b>5187</b>	353	727	2757	<b>3837</b>
Fr	22	183	513	1112	<b>1808</b>	371	817	3122	<b>4310</b>	311	699	2419	<b>3429</b>	263	606	1829	<b>2698</b>
Sa	23	130	473	807	<b>1421</b>	182	511	1111	<b>1796</b>	152	501	965	<b>1617</b>	155	496	967	<b>1618</b>
Su	24	111	462	760	<b>1353</b>	145	513	828	<b>1457</b>	127	479	809	<b>1416</b>	128	475	797	<b>1399</b>
Mo	25	95	442	706	<b>1250</b>	160	575	1209	<b>1919</b>	144	542	1095	<b>1781</b>	124	493	891	<b>1508</b>
Tu	26	85	443	686	<b>1238</b>	162	629	1281	<b>2055</b>	146	584	1158	<b>1889</b>	118	508	901	<b>1527</b>
We	27	86	442	660	<b>1216</b>	153	611	1222	<b>1975</b>	135	564	1107	<b>1807</b>	113	500	870	<b>1484</b>
Th	28	100	443	646	<b>1196</b>	152	626	1105	<b>1883</b>	139	566	1024	<b>1728</b>	120	499	820	<b>1440</b>
Fr	29	102	442	648	<b>1193</b>	144	555	1029	<b>1713</b>	128	530	951	<b>1609</b>	115	488	791	<b>1394</b>
Sa	30	99	439	670	<b>1218</b>	128	519	827	<b>1454</b>	109	485	771	<b>1365</b>	110	463	734	<b>1306</b>
Su	31	127	443	731	<b>1313</b>	247	501	1478	<b>2219</b>	142	462	821	<b>1425</b>	156	465	913	<b>1535</b>

Monthly Summary of Total Devices for all SSIDs	
Minimum Daily Device Count:	<b>1193</b>
Date of minimum occurrence:	<b>Fri 03/29/2024</b>
Average M-F 8a-6p Device Count:	<b>4141</b>
Maximum Daily Device Count:	<b>6899</b>
Date of maximum occurrence:	<b>Wed 03/13/2024</b>

Summary of Total Devices for all SSIDs by Day of Week					
Day of Week	Avg Min	Day of Week	Avg 8a-6p	Day of Week	Avg Max
Su	1817	Su	1964	Su	2321
Mo	2184	Mo	4512	Mo	5271
Tu	2374	Tu	4841	Tu	5662
We	2325	We	4744	We	5549
Th	2196	Th	3736	Th	4280
Fr	2028	Fr	3128	Fr	3679
Sa	1844	Sa	2046	Sa	2190

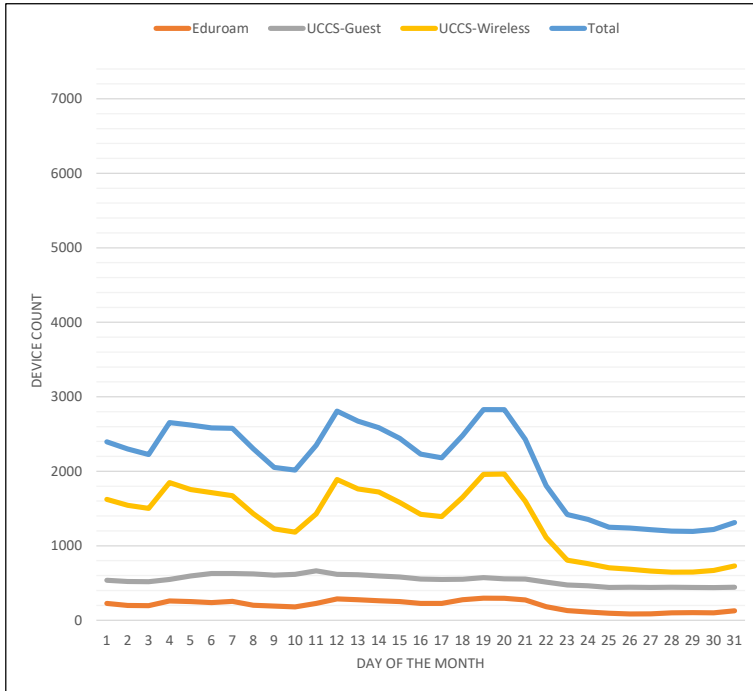
**Report Notes**

- > Device counts are measured every hour, every day, for each of the three SSIDs.
- > The MIN Device count for a particular day is the lowest recorded count based on all of the hourly measurements taken that day.
- > The MAX Device count for a particular day is the highest recorded count based on all of the hourly measurements taken that day.
- > The AVG Device count for a particular day averages all recorded hourly counts. The "all-day" average averages all hourly measurements, while the "8a-6p" average only averages the counts taken during that specific time frame.

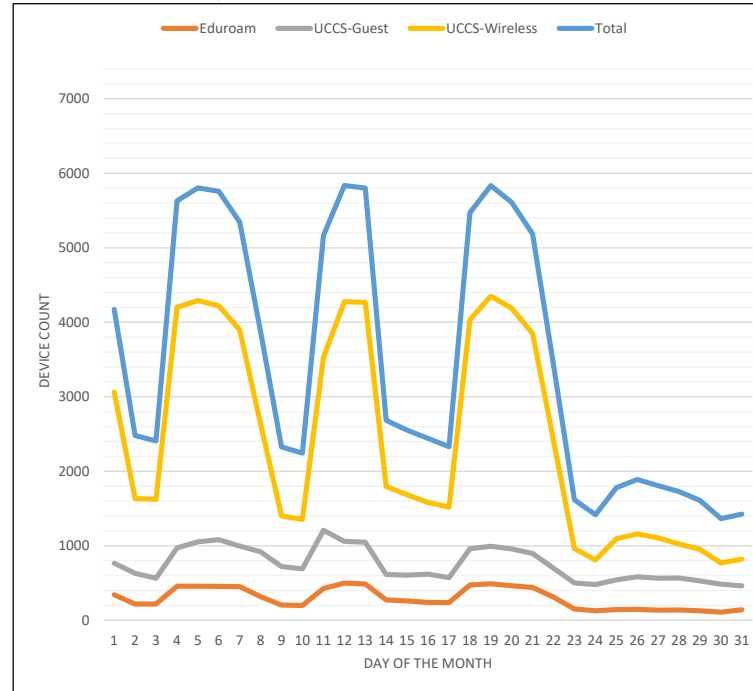
For more on wireless stats and reporting please visit <https://wireless.uccs.edu>

**Device Count by SSID by Day of Month**  
**Report Month: March 2024**

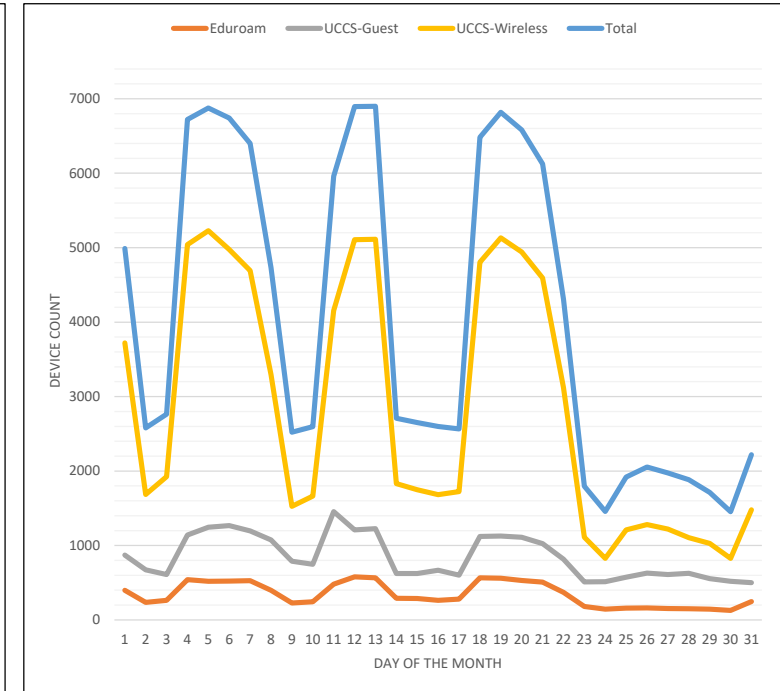
**Minimum Device Count**



**Avg Device Count between 8am-6pm**



**Maximum Device Count**



For more on wireless stats and reporting please visit <https://wireless.uccs.edu>