

Device Count by SSID by Day of Month

Report Month: October 2024

E - Eduroam G - UCSS-Guest W - UCSS-Wireless T - Total (all SSIDs)

D	N	Min				Max				Avg 8am-6pm				Avg all Day			
		E	G	W	T	E	G	W	T	E	G	W	T	E	G	W	T
Tu	1	29	153	314	496	596	949	4379	5893	465	766	3528	4759	237	449	1860	2545
We	2	21	154	307	490	574	997	4492	6053	432	792	3551	4775	229	466	1869	2563
Th	3	21	156	315	497	531	945	4150	5586	403	734	3251	4388	210	429	1712	2352
Fr	4	23	152	311	486	408	714	2928	4033	302	523	2160	2984	157	323	1177	1657
Sa	5	15	148	280	446	86	246	647	967	66	218	576	860	47	188	444	678
Su	6	19	148	264	431	105	235	644	972	61	195	489	745	51	180	420	651
Mo	7	14	152	268	437	551	932	4145	5616	437	759	3309	4504	231	441	1754	2426
Tu	8	22	150	323	495	615	1014	4511	6079	472	812	3580	4864	246	468	1910	2625
We	9	29	161	325	519	556	961	4491	5997	448	774	3535	4757	236	458	1860	2554
Th	10	34	159	349	545	523	943	4168	5592	403	724	3265	4391	218	436	1751	2404
Fr	11	24	157	330	513	381	682	2914	3977	293	528	2178	2999	155	333	1184	1671
Sa	12	23	161	285	475	112	366	705	1139	80	298	613	991	58	227	458	743
Su	13	25	160	288	475	105	303	718	1103	61	228	545	834	54	202	460	715
Mo	14	35	162	306	506	564	895	4125	5584	446	714	3221	4381	244	430	1731	2404
Tu	15	43	158	330	535	601	904	4247	5721	470	734	3437	4641	256	439	1838	2532
We	16	39	160	331	532	575	939	4473	5919	448	751	3426	4625	244	444	1837	2525
Th	17	32	152	339	530	546	845	4077	5446	420	672	3125	4217	225	399	1672	2296
Fr	18	21	150	307	482	367	625	2777	3759	278	468	2017	2762	147	301	1106	1554
Sa	19	19	150	277	449	99	289	694	1075	74	244	601	918	51	199	452	702
Su	20	17	150	264	433	107	284	699	1072	62	211	532	806	54	189	445	689
Mo	21	27	153	285	468	573	855	3870	5298	438	693	3079	4210	237	415	1660	2312
Tu	22	36	156	346	538	634	852	4206	5675	489	707	3425	4621	259	426	1852	2538
We	23	36	164	349	551	588	958	4310	5843	456	744	3423	4623	244	444	1830	2517
Th	24	34	157	353	546	523	817	4071	5411	412	672	3150	4234	222	411	1678	2311
Fr	25	27	160	334	528	360	653	2665	3677	271	486	1960	2717	148	325	1104	1576
Sa	26	19	157	318	496	86	296	662	1044	63	243	553	859	45	210	453	708
Su	27	16	158	290	467	103	240	694	1019	56	205	507	767	47	187	450	684
Mo	28	20	162	309	492	530	903	4080	5505	419	698	3175	4292	223	419	1714	2356
Tu	29	24	162	391	583	590	849	4396	5772	462	705	3463	4630	241	420	1869	2530
We	30	32	155	391	583	569	883	4380	5796	436	712	3438	4586	233	419	1843	2495
Th	31	38	157	379	579	527	810	4064	5388	402	626	3090	4118	213	374	1633	2220

Monthly Summary of Total Devices for all SSIDs	
Minimum Daily Device Count:	431
Date of minimum occurrence:	Sun 10/06/2024
Average M-F 8a-6p Device Count:	4221
Maximum Daily Device Count:	6079
Date of maximum occurrence:	Tue 10/08/2024

Summary of Total Devices for all SSIDs by Day of Week					
Day of Week	Avg Min	Day of Week	Avg 8a-6p	Day of Week	Avg Max
Su	452	Su	788	Su	1042
Mo	476	Mo	4347	Mo	5501
Tu	529	Tu	4703	Tu	5828
We	535	We	4673	We	5922
Th	539	Th	4269	Th	5485
Fr	502	Fr	2866	Fr	3862
Sa	467	Sa	907	Sa	1056

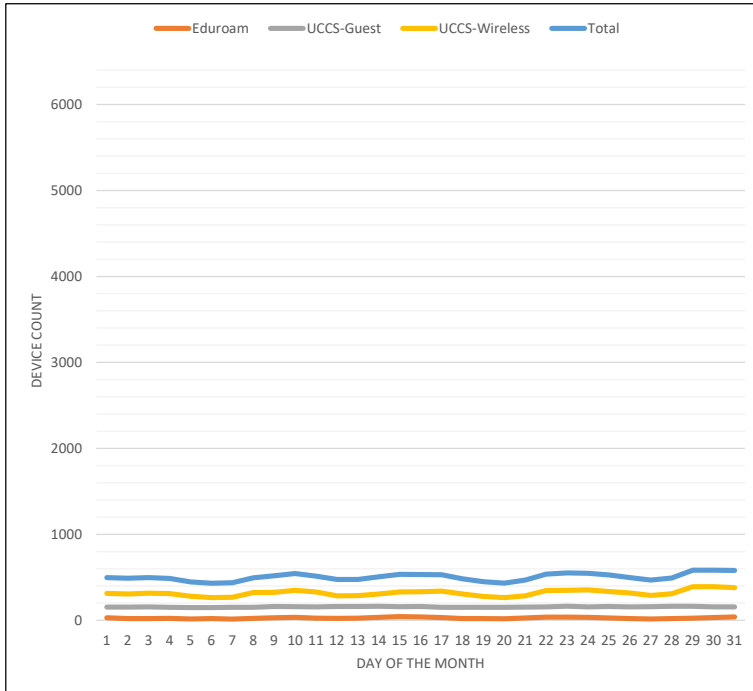
Report Notes

- > Device counts are measured every hour, every day, for each of the three SSIDs.
- > The MIN Device count for a particular day is the lowest recorded count based on all of the hourly measurements taken that day.
- > The MAX Device count for a particular day is the highest recorded count based on all of the hourly measurements taken that day.
- > The AVG Device count for a particular day averages all recorded hourly counts. The "all-day" average averages all hourly measurements, while the "8a-6p" average only averages the counts taken during that specific time frame.

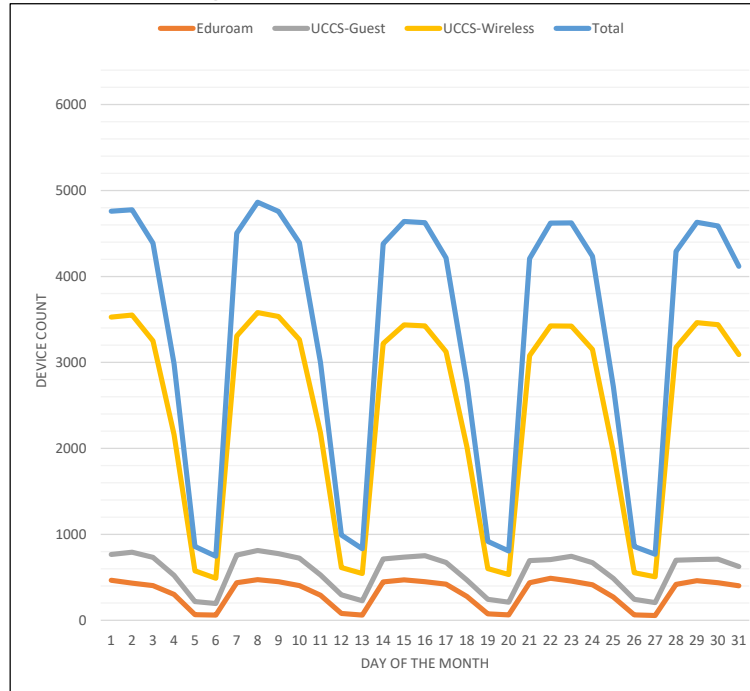
For more on wireless stats and reporting please visit <https://wireless.uccs.edu>

Device Count by SSID by Day of Month
Report Month: October 2024

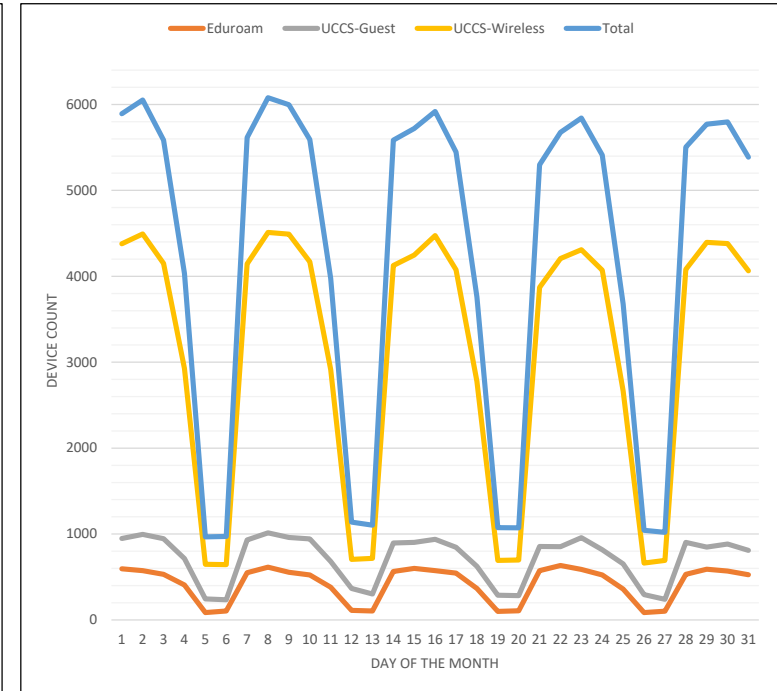
Minimum Device Count



Avg Device Count between 8am-6pm



Maximum Device Count



For more on wireless stats and reporting please visit <https://wireless.uccs.edu>