

Device Count by SSID by Day of Month

Report Month: December 2024

E - Eduroam G - UCSS-Guest W - UCSS-Wireless T - Total (all SSIDs)

D	N	Min				Max				Avg 8am-6pm				Avg all Day			
		E	G	W	T	E	G	W	T	E	G	W	T	E	G	W	T
Su	1	17	137	224	383	81	218	536	812	43	174	370	587	39	162	336	537
Mo	2	23	143	280	455	538	816	3712	5066	408	673	2942	4023	218	391	1577	2186
Tu	3	42	139	350	534	560	851	4115	5470	433	670	3283	4385	232	393	1758	2383
We	4	21	128	336	488	518	831	4073	5413	411	681	3222	4314	221	396	1730	2348
Th	5	29	132	324	496	530	778	3723	5017	397	626	2955	3978	210	370	1589	2169
Fr	6	29	129	322	487	354	599	2832	3757	272	450	2098	2819	149	286	1160	1595
Sa	7	20	129	295	445	103	283	663	1003	70	224	566	860	52	185	448	685
Su	8	20	132	289	447	133	281	745	1134	62	200	534	796	54	179	460	692
Mo	9	27	130	295	457	471	707	3263	4432	244	393	1783	2419	127	244	964	1335
Tu	10	29	129	321	479	500	673	3555	4728	307	447	2273	3027	176	289	1316	1780
We	11	27	130	357	517	518	769	3844	5131	394	606	2944	3944	215	361	1621	2196
Th	12	27	139	346	515	472	740	3491	4700	370	596	2770	3735	203	368	1548	2119
Fr	13	24	142	351	522	326	503	2539	3365	242	402	1922	2566	133	269	1099	1500
Sa	14	22	133	321	480	134	284	904	1314	85	217	689	991	61	182	533	775
Su	15	19	131	311	464	113	291	844	1237	76	222	616	914	60	183	526	769
Mo	16	23	132	301	462	348	445	2502	3282	258	375	1998	2632	147	252	1150	1549
Tu	17	29	129	338	497	362	528	2601	3491	270	422	2074	2765	151	270	1182	1603
We	18	22	126	339	495	278	467	2262	2994	233	387	1851	2471	129	253	1066	1448
Th	19	25	125	331	487	242	375	2097	2714	190	310	1559	2059	106	217	894	1216
Fr	20	18	114	263	395	93	211	923	1217	71	194	724	989	44	156	488	687
Sa	21	12	108	253	379	26	203	355	551	22	147	323	492	19	129	291	439
Su	22	13	106	244	367	25	129	321	472	18	117	287	421	16	113	270	399
Mo	23	13	105	242	365	24	134	315	472	21	130	289	439	18	118	267	403
Tu	24	14	108	235	359	18	125	267	406	16	117	255	388	16	113	247	376
We	25	13	108	225	350	17	115	238	365	16	112	233	361	15	111	231	357
Th	26	13	108	222	347	22	130	261	407	19	127	250	396	17	119	237	373
Fr	27	12	104	200	319	20	126	246	388	16	121	231	367	15	115	220	350
Sa	28	13	109	196	320	17	123	221	354	16	116	213	345	15	114	208	337
Su	29	13	111	193	319	20	118	218	351	16	116	207	338	15	114	202	331
Mo	30	11	110	196	318	26	142	265	429	22	136	247	404	17	123	221	361
Tu	31	11	113	193	319	24	142	269	430	19	133	242	395	16	124	217	357

Monthly Summary of Total Devices for all SSIDs	
Minimum Daily Device Count:	318
Date of minimum occurrence:	Mon 12/30/2024
Average M-F 8a-6p Device Count:	2222
Maximum Daily Device Count:	5470
Date of maximum occurrence:	Tue 12/03/2024

Summary of Total Devices for all SSIDs by Day of Week					
Day of Week	Avg Min	Day of Week	Avg 8a-6p	Day of Week	Avg Max
Su	396	Su	611	Su	801
Mo	411	Mo	1983	Mo	2736
Tu	438	Tu	2192	Tu	2905
We	463	We	2773	We	3476
Th	461	Th	2542	Th	3210
Fr	431	Fr	1685	Fr	2182
Sa	406	Sa	672	Sa	806

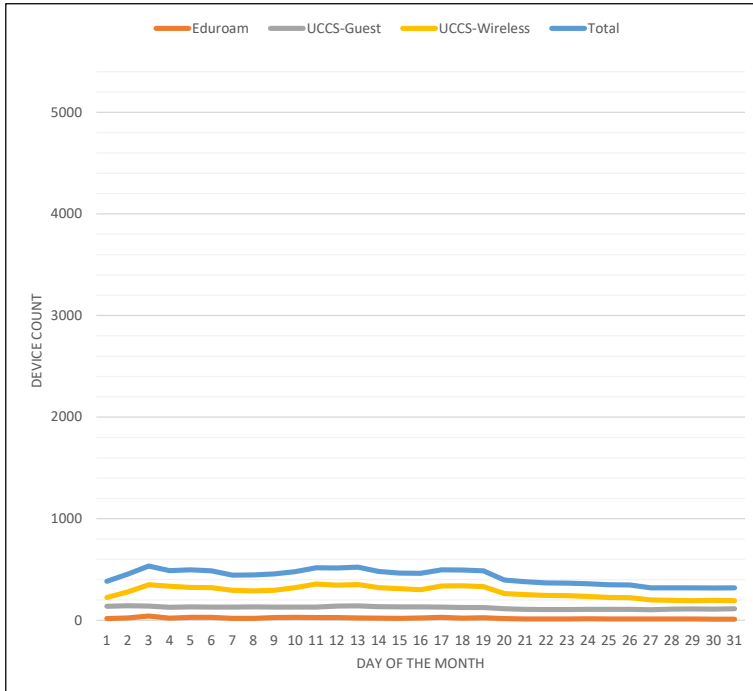
Report Notes

- > Device counts are measured every hour, every day, for each of the three SSIDs.
- > The MIN Device count for a particular day is the lowest recorded count based on all of the hourly measurements taken that day.
- > The MAX Device count for a particular day is the highest recorded count based on all of the hourly measurements taken that day.
- > The AVG Device count for a particular day averages all recorded hourly counts. The "all-day" average averages all hourly measurements, while the "8a-6p" average only averages the counts taken during that specific time frame.

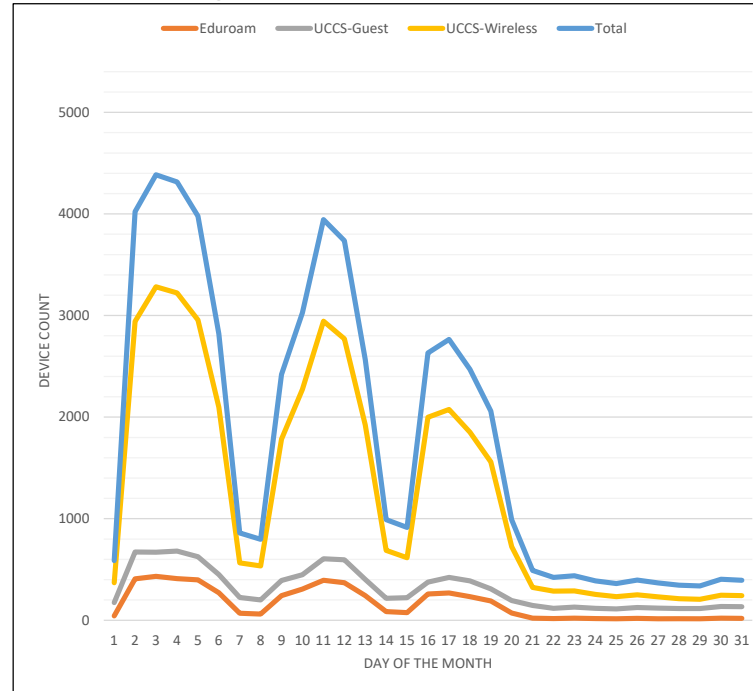
For more on wireless stats and reporting please visit <https://wireless.uccs.edu>

Device Count by SSID by Day of Month
Report Month: December 2024

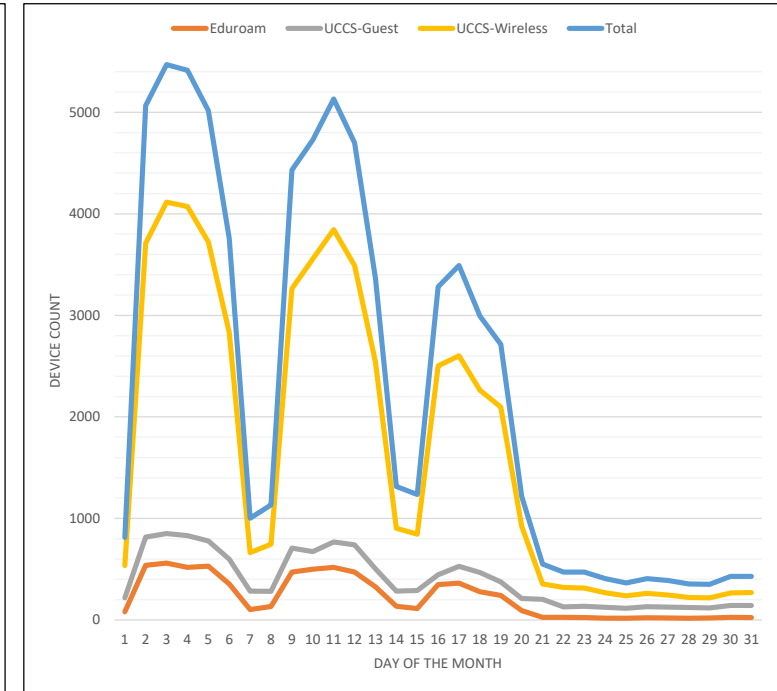
Minimum Device Count



Avg Device Count between 8am-6pm



Maximum Device Count



For more on wireless stats and reporting please visit <https://wireless.uccs.edu>